



# DESIGN INSPIRED



ye-h photography | Prentiss + Balance + Wickline Architects



Jeremy Bittermann | LEVER Architecture



SIERRA  
PACIFIC  
WINDOWS



## ADD SOMETHING SPECIAL TO EVERY PROJECT.

Whether you're looking for a signature design element or simply want your next project to have an added "wow" factor, more attention to your window and door design choices goes a long way. Let light pour into a room in a unique way, or add a contemporary, textured finish to exterior trim. It's a sure way to enhance the value of your projects and your reputation. Let the following pages give you some fresh ideas that are truly Design Inspired.







## TO HELP YOU BUILD BEAUTIFULLY.

The design of every residential and commercial Sierra Pacific window and door is inspired by uncompromising craftsmanship and attention to detail that make it one-of-a-kind. Whether your project needs specific historical detail that meets with preservation approvals, protection from coastal hurricane threats or the latest in modern sight lines and aesthetics, we already build, or will create, exactly the right fit for a completed job you'll be proud to call your own.







## WALLS OF GLASS FOR EXPANSIVE VIEWS.

Fully load-bearing with glue-laminated wood beams that create an all-wood interior, our Architectural Wall Systems inspire innovative wall designs with clean, straight lines and stunning views. Whether you need large daylight openings for your contemporary residential designs, or a smart solution for your commercial curtain wall applications, our AWS meet or exceed today's high energy standards. You can even incorporate doors, operable windows, or use them as structural corner units in wall creations over 14' high.





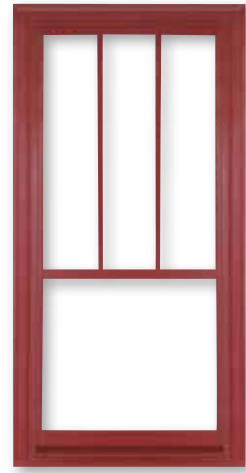


## PIVOT DOORS FOR A SIGNATURE ENTRANCE.

Build bold with the design inspired, modern appearance of our brand new Pivot Doors. Engineered to float inside their frame on a set of pins mounted in the top and bottom of the door, these amazing new doors offer clean lines and a simplicity of form and function that sets them apart from any other entrance door. For a distinctive, custom approach, Sierra Pacific Pivot Doors are a great place to start.







**WESTCHESTER**  
DOUBLE HUNG WINDOWS

## NEW DOUBLE HUNG WINDOWS THAT DOUBLY IMPRESS.

Also debuting this year, our Westchester Double Hung window is a complete upgrade to a true classic. Designed to bring back the original charm of windows hand-crafted over a century ago, they offer narrow check rail sightlines, historically accurate sash proportions, updated structural and thermal performance and a number of design patents including a traditionally styled combination sash lock. It's an enduring and beautiful new option for your residential or commercial plans.







## CASEMENTS AND AWNINGS REDEFINED BY ASPEN.

The signature hidden hardware of our Aspen Collection is just the beginning. It's elegant architectural lines and interior wood have made it a first choice for many. And now the re-engineered Aspen clad series takes performance and energy efficiency to another level. Higher air, water and structural capabilities with improved thermal ratings are now available in even larger sizes. In fact, the Aspen triple glazed window with argon has a U-factor as low as .14 and meets Passive House criteria. For beauty with performance, Aspen is a stunner.

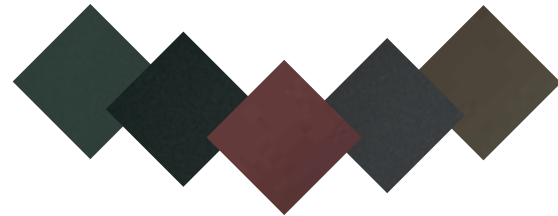






## TEXTURED FINISHES TO LEAVE A LASTING IMPRESSION.

Our exterior clad finishes are available in some truly unique colors and textures, including Cajun Spice and Pesto. To expand your choices even more, we've added Peppered Steel, another eye-catching design touch. This modern industrial finish gives both residential and commercial buildings the high-end look of steel that blends with nearly any architectural style you choose. It's one of the many ways to use Sierra Pacific design details to your advantage.



Textured  
Collection  
- Mocha -  
098

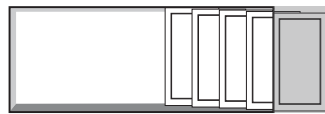




LIFT & SLIDE

## POCKETING LIFT & SLIDE DOORS THAT STAND OUT BY VANISHING.

Designed with advanced mechanics that defy gravity and put them in a class of their own, our Lift & Slide doors are now available in a pocketing configuration. Expanses of glass up to 45' wide and 10' high can be stowed out of sight, leaving you nothing but open air and spacious living, all while sealing out the elements like no other specialty doors made.

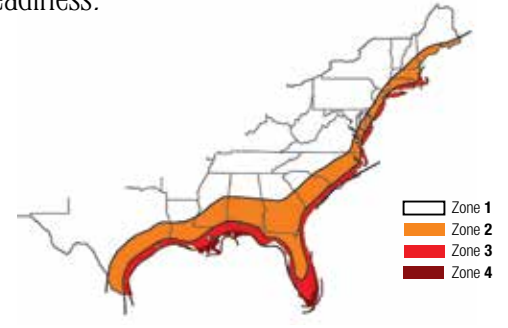






# IMPACT RESISTANCE THAT FEELS SAFER.

Don't let the beautiful wood interiors fool you. Our FeelSafe Bi-fold Doors and FeelSafe Outswing Full Radius Doors are two products within our FeelSafe lineup that provide exceptional door safety and security in hurricane-prone areas. Reinforced with advanced engineering, FeelSafe Outswing Doors are able to perform in the harshest of climates at the southern tip of Florida, while our new FeelSafe Bi-fold Doors provide a rare combination of expanded views and increased storm-readiness.







## H3 WINDOWS WITH AN AWARD-WINNING APPROACH.

Celebrated for their innovation, our H3 windows continue to excel in function and design. At the core you'll still find our patented Fusion Technology™. It integrates extruded aluminum, vinyl and wood into one beautiful window with improved thermal performance, enhanced aesthetics, an extreme seal and easier installation. You'll also find an expanded lineup of SDL profiles, prefinished wood interiors and a continuous head and sill for mulling or stacking units together.

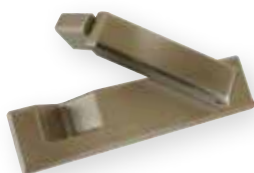




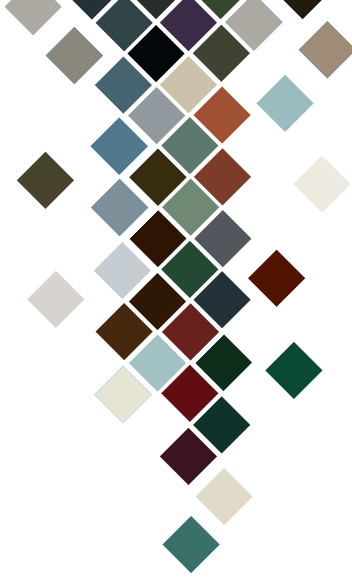


## SIGHTLINES AND STYLES THAT CELEBRATE CONTEMPORARY.

Urban Casement and Awning windows set a new standard in contemporary design with modern industrial aesthetics, one of the narrowest sightlines in the industry and some beautiful new contemporary hardware. To push the contemporary look even further, we created Ultra Coat Black, a striking interior finish available on most of our clad products. It's sure to give any project a beautifully modern, on-trend accent.







## COLOR CHOICES YOU'LL LOOK FORWARD TO CHOOSING.

With 70 powder coat and 5 anodized finishes, we offer more standard exterior finishes than any other manufacturer in the industry. And all are AAMA 2604 or 2605 powder coat, the longest-lasting exterior finishes you'll find. With the limitless colors of nature as our guide, we're constantly on the hunt for more beautiful and unusual choices. More standard colors with the ability to custom color match anything you like, that's the kind of flexibility that makes every project uniquely yours.







## INNOVATIONS THAT BEGIN WITH SEED-TO-WINDOW MANUFACTURING.

Sierra Pacific Windows is part of Sierra Pacific Industries, which owns 1.9 million acres of timberland in California and Washington state. Our vertical integration gives us total control of manufacturing, from planted seed to delivered window and door. The result? New thinking, new designs and uncompromising craftsmanship get passed on to you.





TRUE VERTICAL INTEGRATION

OWN  
THE LAND



PLANT THE SEEDLINGS



MANAGE THE LAND



PROCESS THE WOOD



CONVERT THE LUMBER



USE EVERYTHING



CREATE ENERGY



ASSEMBLE COMPONENTS



SHIP THE PRODUCTS



SIERRA  
PACIFIC  
WINDOWS

SierraPacificWindows.com | P.O. Box 8489, Red Bluff, CA 96080 | 800-824-7744 | A Division of



SIERRA  
PACIFIC  
INDUSTRIES

We reserve the right to change product specifications without notice. Photography used may not represent current product features and options. Sierra Pacific windows and doors are successful thanks in part to our unique patents. Visit [spi-ind.com/ip](http://spi-ind.com/ip) to learn more. © 2019 Sierra Pacific Windows